

## PNL FLAT PANEL

PROJECT: \_\_\_\_\_

SCHEDULE: \_\_\_\_\_ DATE: \_\_\_\_\_

PREPARE BY: \_\_\_\_\_

NOTES: \_\_\_\_\_

### DESCRIPTION

naturaLED® qualified DLC Premium and Standard Flat Panels (PNL) have an integrated LED technology with a low profile design. The lightweight LED provide a smooth and uniform light distribution from edge-to-edge for an even and consistent color design. Perfect solution for your interior lighting needs for offices, schools, and meeting rooms. The Flat Panel are easily installed with maximum energy savings; comes in standard configurations of 1'x4', 2'x2', and 2'x4' for mounting in T-Bar/Grid ceilings or optional surface mount box kit.



**Rated Life Hours 50,000**  
**Warranty 5 Years**

### APPLICATIONS

Conference room, meeting rooms, offices, schools, hospitals

### FEATURES

- Damp Location
- UL Listed
- Color Temp: 3500K, 4000K, 5000K
- Voltage: 120-277V
- Power Factor: >0.9
- Surge Protection: 1KV
- Dimmable: 1-10V
- CRI: 80
- Operating temperature: - 4°F - 104°F
- Lighter weight housing for easy installation
- L70 rated chip for over 100,000 projected life hours
- Uniform and consistent color from edge to edge
- 5Year Warranty
- Optional for Purchase: Surface Mount Kit, Emergency Driver Kit

### ACCESSORIES

- Surface Mount Kit
- Emergency LED Driver + Bracket
- Earthquake Hook (Pre-installed)

### SAMPLE NUMBER LED-FXPNL40/1X4/835G1

STYLE	FAMILY	SERIES	WATTAGE	SIZE	CRI	COLOR TEMP	VERSION
LED	FX	PNL	40	1X4	8	35	G1
LED Lighting	Fixture	Flat Panel Light	40 Watt	1ft x 4ft	CRI 80	3500K	G1 Version



**ORDERING**

Watts (W)	Ordering Code	Description	CCT (K)	Lumens (Lm)	Size	Equiv. Wattage (W)	Beam Angle	Damp Location
41	<b>7675</b>	LED-FXPNL40/1X4/840G1	4000K	4,397	1'x4'	90-100	110°	•
40	<b>7720</b>	LED-FXPNL40/2X2/835G1	3500K	4,381	2'x2'	90-100	110°	•
40	<b>7685</b>	LED-FXPNL40/2X2/850G1	5000K	4,489	2'x2'	90-100	110°	•

**ACCESSORIES (Ordered Separately)**

**Surface Mount Kit**



P10097 MT-2X2BOXG1  
(2'X2')

**Emergency Battery**



7338 BAEM8L-60BC/347-A  
(Emergency backup driver for 2'x2")

**Earthquake Hook**

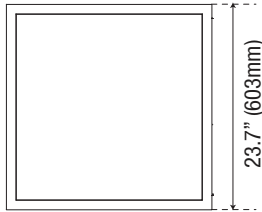


P10100 MT-PNL-HOOK-6PCS  
(Edge Lit Panel Earthquake Hook)

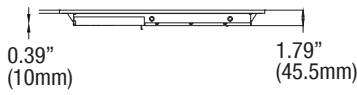
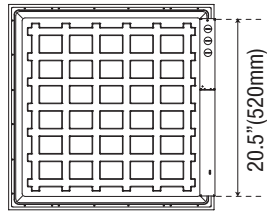
DIMENSIONS

2'x 2'

Front

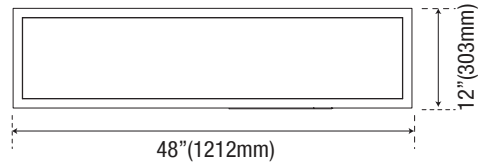


Back

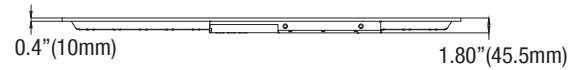
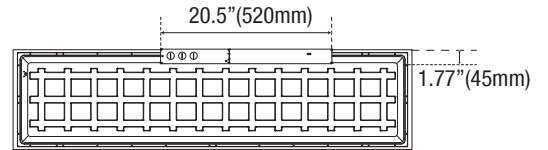


1'x 4'

Front



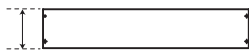
Back



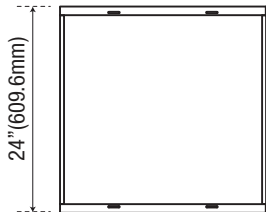
CEILING MOUNT KIT

2'x 2'

4.52" (114.8mm)

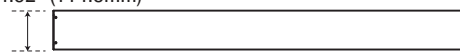


24" (609.6mm)

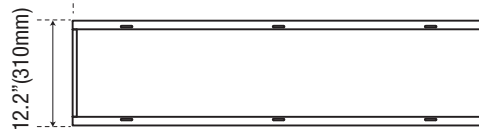


1'x 4'

4.52" (114.8mm)

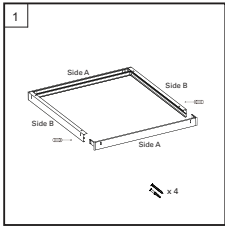


48.03" (1220mm)

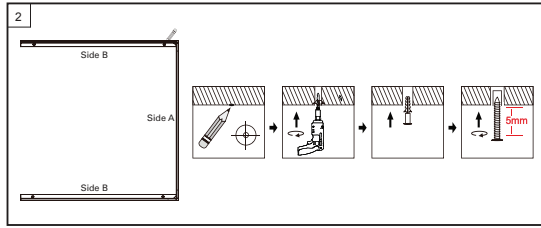


INSTALLATION

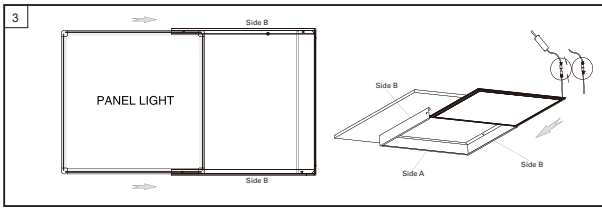
Surface Mount Kit



Connect 3 sides of the surface mount frame with snap-on.

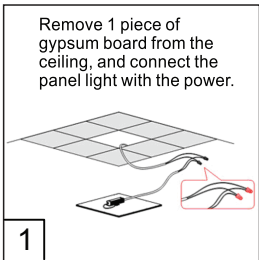


Locate four mounting holes on Side B of the frame. Drill the hole and insert plastic anchors. Fasten frame to the ceiling.

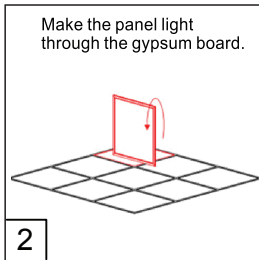


Slide in the panel light and connect the wires, then close the frame.

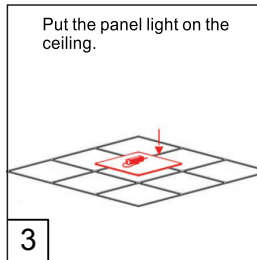
Recessed Mount



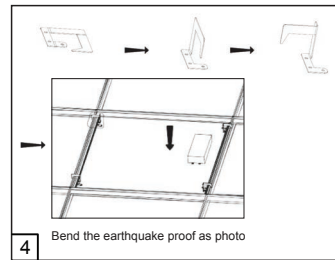
Remove 1 piece of gypsum board from the ceiling, and connect the panel light with the power.



Make the panel light through the gypsum board.

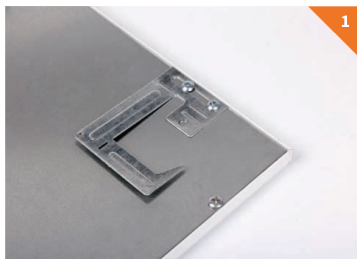


Put the panel light on the ceiling.



Bend the earthquake proof as photo

EARTHQUAKE HOOK



1



2



3

1. Pull earthquake hook away from panel until facing perpendicular to the panel backing (Fig. 1).  
2. Bend hook arm until facing perpendicular to the hook body (Fig. 2).  
3. Hook panel light onto T-bars until panel is fully supported (Fig. 3).



Earthquake Hooks



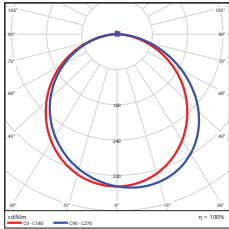
Before Installation



After Installation

PHOTOMETRICS CHART

41 Watt - 1'x4'  
DLC Standard

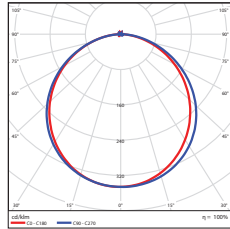


**Illuminance at a Distance**

Center Beam fc	Beam Width	
2.5R	24.2 fc	7.2 ft 7.6 ft
5.0R	60.4 fc	14.4 ft 15.1 ft
7.5R	26.8 fc	21.6 ft 22.7 ft
10.0R	15.1 fc	28.8 ft 30.3 ft
12.5R	9.67 fc	35.9 ft 37.8 ft
15.0R	6.71 fc	43.1 ft 45.4 ft

■ Vert. Spread: 110.4°  
■ Horiz. Spread: 113.1°

40 Watt - 2'x2'  
DLC Standard



**Illuminance at a Distance**

Center Beam fc	Beam Width	
2.5R	24.3 fc	7.2 ft 7.8 ft
5.0R	60.6 fc	14.4 ft 15.7 ft
7.5R	27.8 fc	21.6 ft 23.5 ft
10.0R	15.2 fc	28.8 ft 31.3 ft
12.5R	9.70 fc	36.0 ft 39.2 ft
15.0R	6.74 fc	43.2 ft 47.0 ft

■ Vert. Spread: 110.5°  
■ Horiz. Spread: 114.9°

PACKAGE

Case Qty 2 pcs

